



STUDENT CARE

@ Anglo Chinese
School (Primary)

Epworth Student Care is under the umbrella of Epworth Community Services. The vision is Strong Families, Resilient Living, Beautiful Minds.

Epworth Community Services is a social service agency that helps at-risk children and youths from needy and disadvantaged families. We want to create a better world for them so that they can develop their potential. Our work focuses on promoting the mental well-being of children and youths by building strong families and imparting skills for resilient living. We have 5 departments, namely Epworth Home Sweet Home, Epworth Foster Care, Epworth Family Welfare, Epworth Literacy and Epworth Student Care.

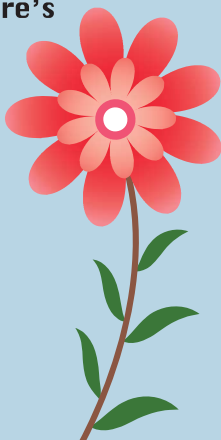
Our first school-based student care started in 2009. For the past 12 years, we have served around 801 students from 4 different schools.

mission

To reach out in Christian love, by providing quality programmes and services to all children, youths, parents and their families, of all language, race and religion, and nurturing each family member in body, mind and spirit.

Epworth Student Care's vision

A Place To *Grow*
And *Bloom*



our commitment

Help our students BLOOM into 21st
century competent individuals

- B**elief in oneself
- L**ifelong learning attitude
- O**verall development
- O**pen to ideas and to share them
- M**entor to another person

OUR PROGRAMME

1 hour study-time (daily)



outdoor activities (2 hours/week)



enrichment programmes (2 hours/week)

We have a series of programmes that focuses on activities and knowledge that are not provided in mainstream education system, such as, life sciences, arts and aesthetics, humanities and public speaking.



learning journeys (school holidays)

character development (2 hours/week)

Our core values are love, respect, responsibility, resilience, integrity and harmony. These values are taught systematically together with the school's values and are incorporated into our programme and activities.



SCHEDULE

day / time	monday	tuesday	wednesday	thursday	friday
1:30pm	sign in @ epworth student care & assembly lunch & shower				
1:40pm	assembly, briefing and announcements				
1:50pm	lunch and shower				
2:30pm	nap-time cca / remedial classes				
3:00pm	supervised study time				
4:00pm	tea break				
4:15pm	enrichment programme	character development	enrichment programme	character development	recap for the week
5:15pm	outdoor activities indoor creative play				
6:30pm	prepare to go home pack up, clean the centre & sign out				
7:00pm	centre closes				

school holidays operating hours: monday to friday - 7.30am to 7.00pm

FEES CHARGEABLE (inclusive of GST)

first payment	cost	optional & add-ons	cost
Registration Fee (one time) (inclusive of 2 Epworth T-shirts and a copy of the Epworth Student Care Parent's Handbook)	\$50.00	Epworth Student Care T-shirt (if you require extra)	\$12.00
Deposit (refundable, excluding GST)	\$300.00	School Holiday Outings	As per activity
Monthly Epworth Student Care Fee (excluding GST) (inclusive of lunch, afternoon tea-break and enrichment materials)	\$300.00	School Holiday Surcharge (inclusive of morning tea-break and holiday materials)	\$6.00 per day

Updated on Aug 2022



We are the parents of Ivan and Ian. They had been with Epworth since primary 1. We had seen them grown up and more discipline under the care of the teachers from Epworth.

We really appreciate Epworth for helping us to take care of the 2 boys as we are working parents, helping them with the school work, looking after them after school. I can't imagine without Epworth how are we going to cope with that.

Thank you Epworth!

Sunny and Vicky
Parents of Ivan Lew (P3) and Ian Lew (P2) 2022

Both my sons - Ryan & Ryo, have been attending Epworth ever since Primary One. It was through my eldest son that we gained the trust & confidence to enroll my younger son into Epworth as well. The teachers have been patient, kind & caring, understanding the needs for a progressive journey to instill independence, responsibility & accountability for themselves.

The school holidays is also planned to alleviate the load for working parents by having a month full of activities planned to keep my boys occupied while maintaining the balance between studies & play.

Special mention to Mr Stanley Quek for always being there for my family & keeping us constantly updated with their daily activities. He has made Epworth such a reliable & safe haven for my boys that we feel assured leaving them in Epworth & his mentorship.

Kevin
Father of Ryan (P5 2022) & Ryo Tan (P2 2022)



CONTACT US

Julie Chu
9660 5635
juliechu@epworth.sg

Stanley Quek
62597579 / 98258870
stanleyquek@epworth.sg

Office Hours:
1030am - 6.30pm
(Mon to Fri)

Website:
www.epworth.sg

